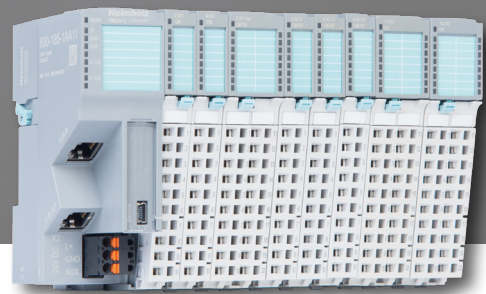




TB20.
DISTRIBUTED FIELDBUS I/O SYSTEM

SAVING LIVES



Looking to China

Thanks to the TB20 I/O system from Helmholz, machines can quickly be converted to produce protective masks

All around the world, nothing is more valuable than a protective mask right now. In the spirit of #stayhealthy, Helmholz GmbH & Co. KG is happy its I/O system is being used in the production of disposable protective masks by a customer in China.

Since the outbreak of the Covid-19 illness, there's been a large gap in the supply of masks on a global scale. That's why lots of companies are converting some areas of production to manufacture breathing masks.

The assembly lines of a large Chinese manufacturer outfitted with TB20 I/O systems from Helmholz have been producing disposable protective masks flawlessly from the get-go.

Helmholz and the producing company are demonstrating that flexibility in automation solutions can quickly achieve reliable results – even in exceptional times.

The TB20 distributed I/O system

With the TB20 I/O system, you can generate efficient and functional added value in a variety of different areas of application – irrespective of the fieldbus, and proven in practice!

Thanks to the wide variety of Helmholz TB20 I/O systems and available interface connections for PROFINET, PROFIBUS-DP, CANopen®, Ethernet IP, ModbusTCP and EtherCAT, you can create sustainable, future-oriented control concepts in your systems. When mass-producing products with machines, your module configuration can stay the same – you only need to

change the bus coupler for the respective control-specific requirement. The base module, bus terminator and 24 V power supply connector are included with the system.



Advantages of the TB20 I/O system from Helmholz

Three-component modular design – The I/O module consists of a separate front connector, an electronic module and a base module.

Save time thanks to quick and easy inspection of expansion and maintenance work.

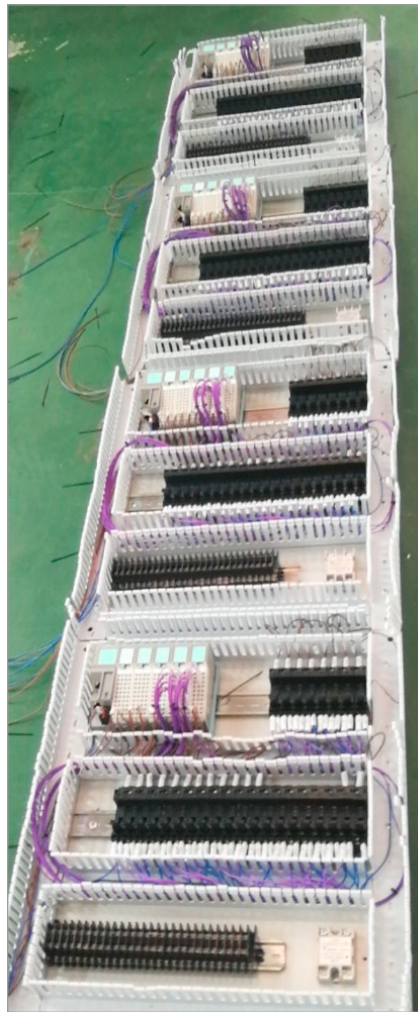
Ideal handling, compact design – Its space-saving system components are suitable for rough industrial environments, are mechanically stable and feature an IP20 protection rating for a reliable electrical connection.

Achieve an optimum system engineering breadth using modules with up to 16 digital or 8 analog channels and digital mix in/out modules.

Clear, unambiguous labeling – This allows direct allocation of the terminal to the respective LED display. The labeling strips are suitable for laser printers.

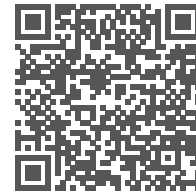
Hot-swapping capability – Individual modules can be quickly and easily replaced. Minimize downtimes to a noticeable degree.

Using the TB20 ToolBox, your system configuration and the parameter settings of the modules used can be created and transferred to the coupler with ease.



© Helmholz China Rep Office

Discover the entire product portfolio of the TB20 I/O system.



View product information online!

Helmholz GmbH & Co. KG
Hannberger Weg 2
91091 Großenseebach
Germany

Phone: +49 9135 7380-0
Fax: +49 9135 7380-110
info@helmholz.de
www.helmholz.com

Visit the Helmholz YouTube channel and learn how to use the TB20 ToolBox through video tutorials.

Click here ► to watch the videos!

